

Full Surface Geared Hinges

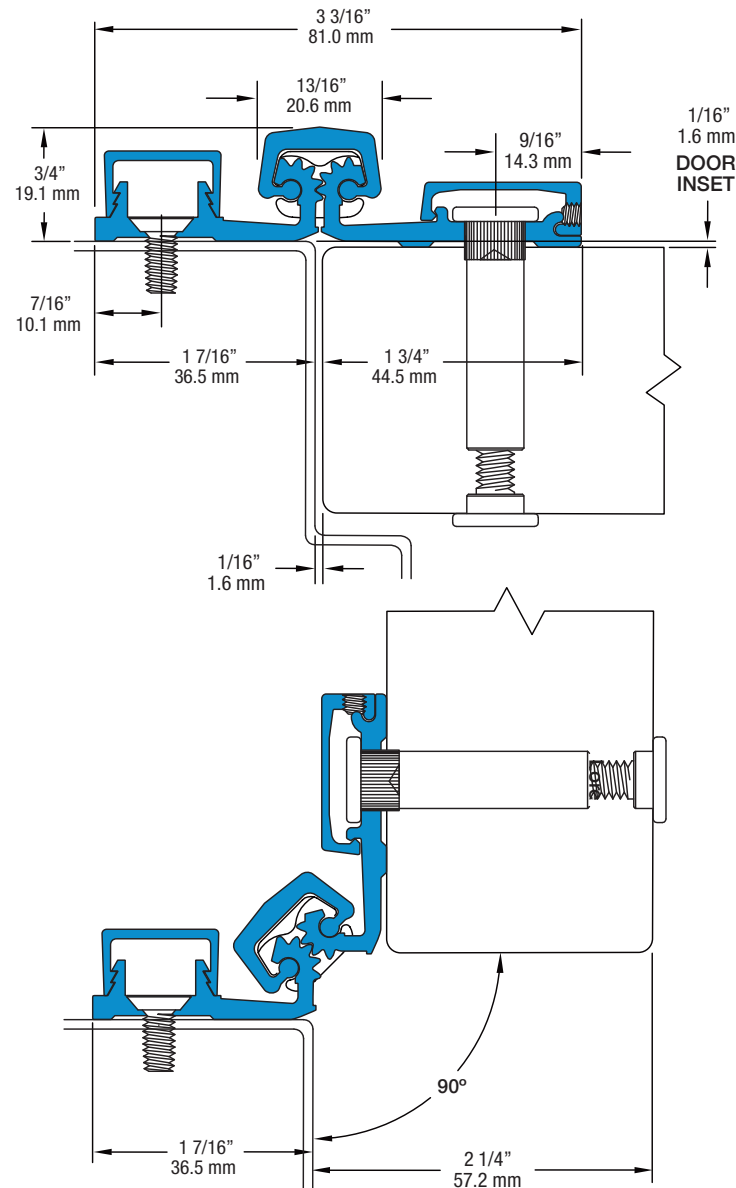
SL57 85" HD600

All dimensions are measured in inches and [millimeters] from the top of the door to the centerline of the holes and bearings.

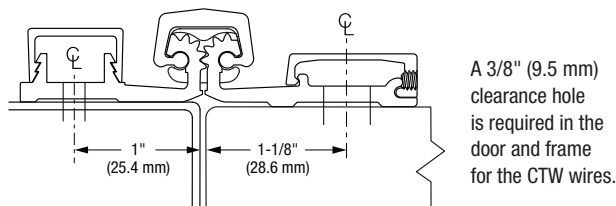
Dimensions shown inside boxes are frame facing mounting screw holes.

Choose location for CTW prep for bearing slots dimensioned. CTW4/5 = 1 location; CTW8/10 = 2 locations; CTW12 = 3 locations.

SL57 Profile



CTW Prep Location Dimensions



24 fasteners / 32 bearings

