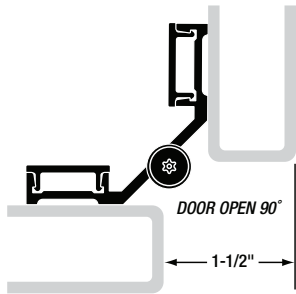


DOOR CLOSED



DOOR OPEN 90°

MATERIAL: 6463-T5 aluminum with 1/4" diameter 303 stainless steel self-closing pin assembly. Long-life split nylon bearings.

LENGTH: 54" length standard for nominal door heights. Special lengths available: 24" minimum, 72" maximum.

LOAD/FREQUENCY: For high-frequency partition doors 36" wide weighing up to 80 pounds without frame or door reinforcement. Consult factory for doors wider than 36".

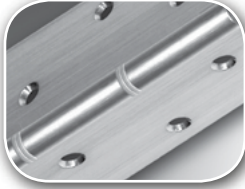
FINISH: Bright dipped anodized.

ORDER: Specify if safety-lift feature is required. #14 x 3/4" Torx® button head sheet metal screws are provided as a standard pack. One-way shoulder bolts optional at extra cost.

SL402TP HINGE SCREW COUNT

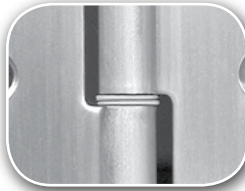
HINGE LENGTH	DOOR SCREWS	FRAME SCREWS
54"	6	6

SELECT Advantages



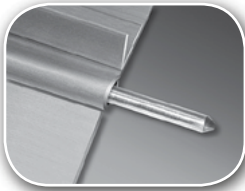
TEMPLATED HOLE PATTERN

SELECT hinges line up perfectly, precisely, every time. Makes installation easier and faster.



NYLON DOUBLE BEARINGS

Create a strong, free-moving assembly that allows closers and other door hardware to function properly.



STAINLESS STEEL PIN

Delivers high tensile strength by forming a strong, free-moving unit. Flexible and strong in abused openings.