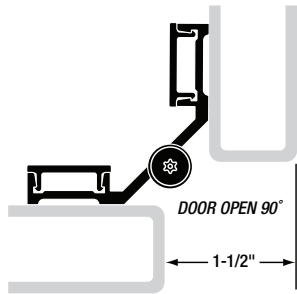


DOOR CLOSED



DOOR OPEN 90°

**MATERIAL:** 6463-T5 aluminum with 1/4" diameter 303 stainless steel self-closing pin assembly. Long-life split nylon bearings.

**LENGTH:** 54" length standard for nominal door heights. Special lengths available: 24" minimum, 72" maximum.

**LOAD/FREQUENCY:** For high-frequency partition doors 36" wide weighing up to 80 pounds without frame or door reinforcement. Consult factory for doors wider than 36".

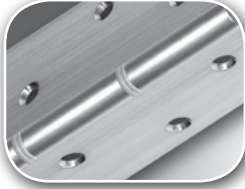
**FINISH:** Bright dipped anodized.

**ORDER:** Specify if safety-lift feature is required. #14 x 3/4" Torx® button head sheet metal screws are provided as a standard pack. One-way shoulder bolts optional at extra cost.

### SL402TP HINGE SCREW COUNT

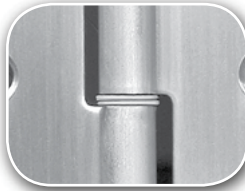
| HINGE LENGTH | DOOR SCREWS | FRAME SCREWS |
|--------------|-------------|--------------|
| 54"          | 6           | 6            |

## **SELECT Advantages**



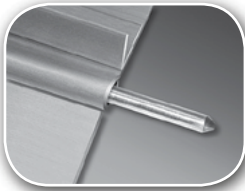
### **TEMPLATED HOLE PATTERN**

SELECT hinges line up perfectly, precisely, every time. Makes installation easier and faster.



### **NYLON DOUBLE BEARINGS**

Create a strong, free-moving assembly that allows closers and other door hardware to function properly.



### **STAINLESS STEEL PIN**

Delivers high tensile strength by forming a strong, free-moving unit. Flexible and strong in abused openings.